


# Jane Goodall Worksheets

Name: \_\_\_\_\_


## Goodall's Biography


 Jane Goodall is known for her groundbreaking studies in chimpanzees behavior. Summarize the facts you've read and write down the points below.


CAREER AND ACHIEVEMENTS	EARLY LIFE
_____	_____
_____	_____
_____	_____


Name: \_\_\_\_\_


## Know the Primates!


 A primate is a member of the most developed and intelligent group of mammals. Get to know different species of primates by writing down the number that fits with the description, while also filling in the blanks in the purple boxes.

 \_\_\_\_\_

 \_\_\_\_\_

 \_\_\_\_\_

 \_\_\_\_\_


 \_\_\_\_\_


- \_\_\_\_\_ are the largest apes and can weigh up to 225 kilograms.
- \_\_\_\_\_ are great apes known to be human's closest living relatives.
- \_\_\_\_\_ are a small species of primates that are found inhabiting forests in Southeast Asia.
- \_\_\_\_\_ are generally known for their face resembling humans. They originated in Africa.
- \_\_\_\_\_ are great apes found in Indonesia and Borneo.

JANE GOODALL WORKSHEETS

Name: \_\_\_\_\_

## First Look at Jane

 Watch the video below about Jane's journey in Tanzania. Answers the questions below to describe Jane Goodall.

 2.51

URL  
<https://youtu.be/rcL4jnGT L1U>

What do you think about her work?

What is the most important discovery about chimpanzees in this video?

How do you think that discovery will affect the relationship between human and the chimps?

JANE GOODALL WORKSHEETS

KIDSKONNECT.COM

# Jane Goodall Facts



**Jane Goodall is an English primatologist and anthropologist. She has devoted her entire life to studying primates, and her research has redefined the relationship between humans and animals. She's also an active environmental speaker, and she still travels the world today to share about the importance of conservation as a way to save the planet.**

## EARLY LIFE

- ★ Jane Goodall was born in London, England, on April 3, 1984. She was the eldest daughter of Mortimer Herbert Goodall, a businessman, and Margaret Myfanwe Joseph. She had one sister named Judy.
- ★ Since she was a child, Jane has loved observing animal behavior. In her free time, she liked to write notes and sketches about birds and animals she had seen. Her favorite books were about zoology and ethology.



# Jane Goodall Facts

- ★ Because of her immersive interest in animals, young Jane dreamed of travelling to Africa to observe the animals in their natural habitats.
- ★ Jane later attended Uplands private school, and she graduated in 1952. She landed her first job as a secretary at Oxford University, and she also worked part-time at a London-based documentary film company to finance her upcoming trip to Africa.

## CAREER AND ACHIEVEMENT

- ★ In the late 1950s, Jane finally arrived in Kenya, Africa, at the invitation of a childhood friend. She met Louis Leakey, a famous anthropologist and museum curator. Louis hired Jane as a secretary.
- ★ Under Louis' supervision, Jane was sent to Olduvai Gorge, a site rich in prehistoric remains, to study the vervet monkey. At that time, many studies towards chimpanzees had been unsuccessful since their behaviors are unnatural. This was either caused by the size of the safari, which frightened the chimps, or the little amount of time spent by observers to gain knowledge.



Young Jane with her binoculars



Jane gets close to the chimpanzee





# Jane Goodall Facts

- ★ Louis believed Jane was capable of enduring the long-term isolation in the wild, Many experts had questioned Louis' decision to place Jane in the field, considering she had no formal background or scientific education.
- ★ In July 1960, Jane, accompanied by her mother and African cook, arrived on the shore of Lake Tanganyika, with a goal of studying the chimpanzees.
- ★ At first, Jane had several failed attempts of approaching the chimpanzees. She could not get closer than 500 yards before the chimps fled. Jane later used another approach, one of observation, where she appeared at the same time every morning to bring bananas to feed the chimps.



Jane Goodall with a group of chimps

★ Jane's continuous effort eventually bore results. After a year of using the same observation method, Jane was able to move as close as 30 feet away from their feeding area. The chimps soon tolerated her presence and showed no fear of Jane.

★ Her systematic daily feeding method, known as the "Banana Club", had made Jane closely acquainted with the majority of the chimps. She imitated their behaviors while spending time with them.





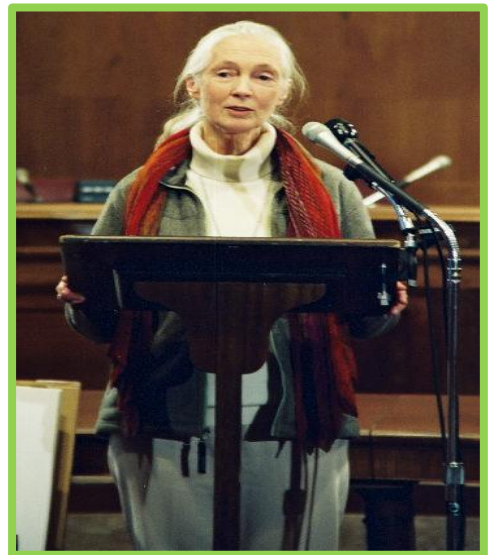
# Jane Goodall Facts

## THE DISCOVERIES

- ★ The constant contact with the chimps made her discover a number of surprising behaviors. The chimps apparently have a complex social system, with ritualized behaviors, and communicate through a “language” system containing more than 20 individual sounds. Also, they’re not vegetarian as was previously thought to be true.
- ★ She also noted that chimps are capable of tool-making activities, searching for food, and using touch to comfort one another and develop long-term familial bonds. Such discoveries reaffirmed the close connection between chimps and human traits.

## LEGACY

- ★ Because of her remarkable discoveries, Jane received a Ph.D. in ethology from Cambridge University in 1965. She later held a visiting professorship in psychiatry at Stanford University from 1970 to 1975. In 1973, she was appointed as a honorary visiting professor of zoology at the University of Dar es Salaam in Tanzania.

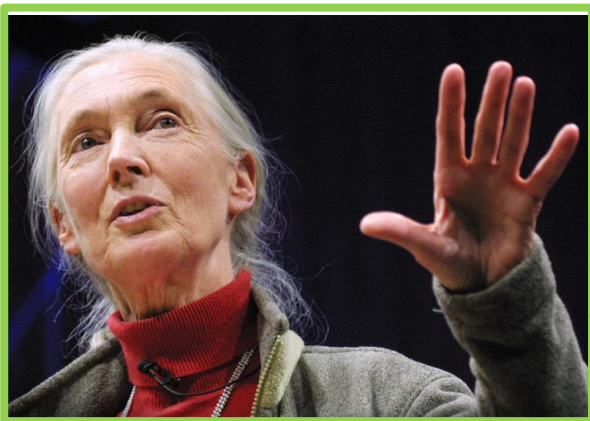


Jane Goodall giving a lecture for America's Forest Press Conference

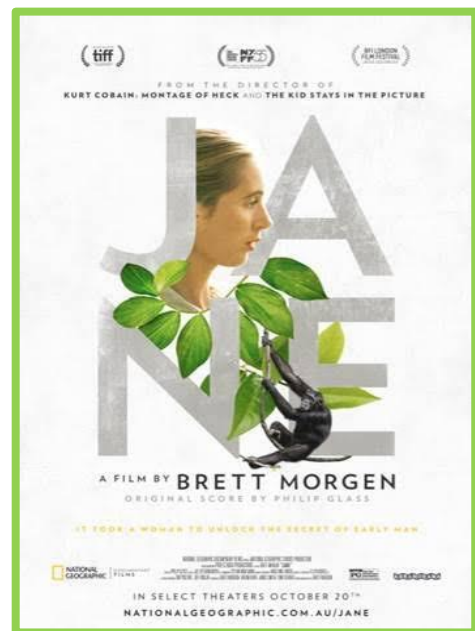


# Jane Goodall Facts

- ★ In recent times, Jane has used her previous studies to educate the public about wild chimpanzees' endangered habitats, and she uses her voice to fight unethical treatment of chimpanzees that are used for scientific research.
- ★ Jane also encourages world leaders to develop nature-friendly tourism programs and actively works with businesses and local governments to promote ecological responsibility.
- ★ Jane has published several books from her fieldwork observations. *In the Shadow of the Man* was her first published work. Her life stories and legacy were captured in a documentary film, named 'Jane', which was played during the 2017 Toronto International Film Festival.



Jane Goodall gives a Ted Talk



The 'Jane' movie poster for the Toronto International Film Festival in 2017



Name: \_\_\_\_\_

# Goodall's Biography



Jane Goodall is known for her groundbreaking studies in chimpanzees behavior. Summarize the facts you've read and write down the points below.

## CAREER AND ACHIEVEMENTS

---

---

---

---

---

---

---

---

---

---

## EARLY LIFE

---

---

---

---

---

---

## LEGACY

---

---

---

---

---

---

---

---

---

---



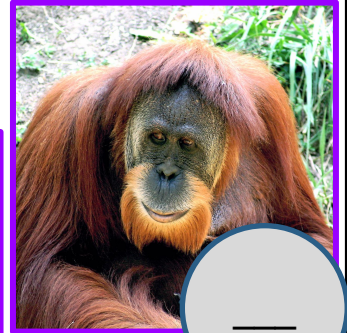
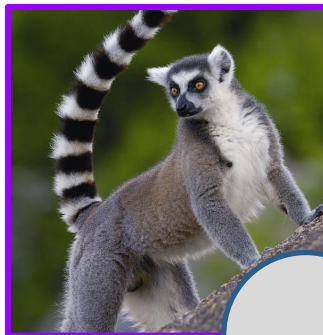
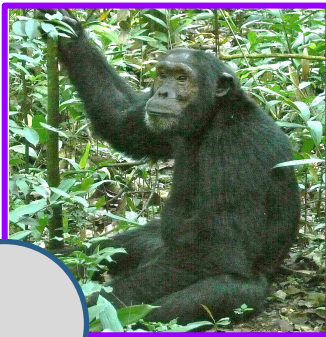
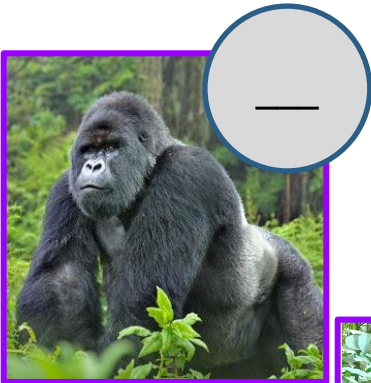


Name: \_\_\_\_\_

# Know the Primates!



A primate is a member of the most developed and intelligent group of mammals. Get to know different species of primates by writing down the number that fits with the picture description, while also filling in the blanks in the purple box.



1

\_\_\_\_\_ are the largest apes and can weigh up to 225 kilograms.

2

\_\_\_\_\_ are great apes known to be human's closest living relatives.

3

\_\_\_\_\_ are a small species of primates that are found inhabiting forests in Southeast Asia.

4

\_\_\_\_\_ are generally small, and their face resembles a fox's face. They originated in Madagascar.

5

\_\_\_\_\_ are great apes native to Indonesia and Malaysia.



Name: \_\_\_\_\_

# First Look at Jane



Watch the video below about Jane's journey in Tanzania. Answers the questions below to describe Jane Goodall.



URL

<https://youtu.be/rcL4jnGT L1U>

What do you think about her work?

---

---

---

What is the most important discovery about chimpanzees in this video?

---

---

How do you think that discovery will affect the relationship between human and the chimps?

---

---



# True or False



Jane Goodall is a world-renowned expert in chimpanzees. See the facts information below and write (X) if the statement is false and (O) if the statement is true.



## FACTS INFORMATION



Jane Goodall spent 20 years studying wild chimpanzees.

Jane had a chimpanzee toy as a present from her father when she was one year old.

Jane's important discoveries on chimpanzees are: 1) they used tools, and 2) they are not vegetarian.

Before Jane worked as a primatologist, she had worked as a secretary and a filmmaker's assistant.

### SOURCE

<https://blog.bookstellyouwhy.com/ten-facts-you-should-know-about-jane-goodall>





Name: \_\_\_\_\_

# Goodall's Good Traits



As a primatologist, Jane actively encourages everyone to preserve the environment and practice conservation. Name some good traits from Jane that you could develop in order to better protect the environment.

1

---

---

2

---

---

3

---

---

4

---

---



Name: \_\_\_\_\_

# Lesson about Chimps



Chimpanzees are known as the animal that is closely related to humans. Fill in the blanks below to learn more about Jane Goodall's findings on chimpanzees.

Chimpanzees in the wild rarely live longer than \_\_\_\_\_ years.

The great apes beside chimpanzees are \_\_\_\_\_, \_\_\_\_\_, and \_\_\_\_\_



Chimpanzees can be taught human languages, such as \_\_\_\_\_, during captivity.

Chimps communicate much like \_\_\_\_\_. They kiss, touch hands, and tickle.



Chimpanzees can be found in about \_\_\_\_\_ African countries, mostly in Central Africa.



Chimps are considered an \_\_\_\_\_ species. There are only around 172.000 – 300.000 chimps in the wild.

## SOURCE

<https://www.janegoodall.org.uk/chimpanzees/chimpanzee-central/15-chimpanzees/chimpanzee-central/21-chimp-facts>



Name: \_\_\_\_\_

# Save the Planet



Jane's continuous efforts to promote sustainability and conservation are good values that we should take as an example. Fill the boxes below with actions that you can take to save the planet.

## OCEAN

---

---

---

---

---

---

---

## FOREST

---

---

---

---

---

---

---

## ANIMAL WELFARE

---

---

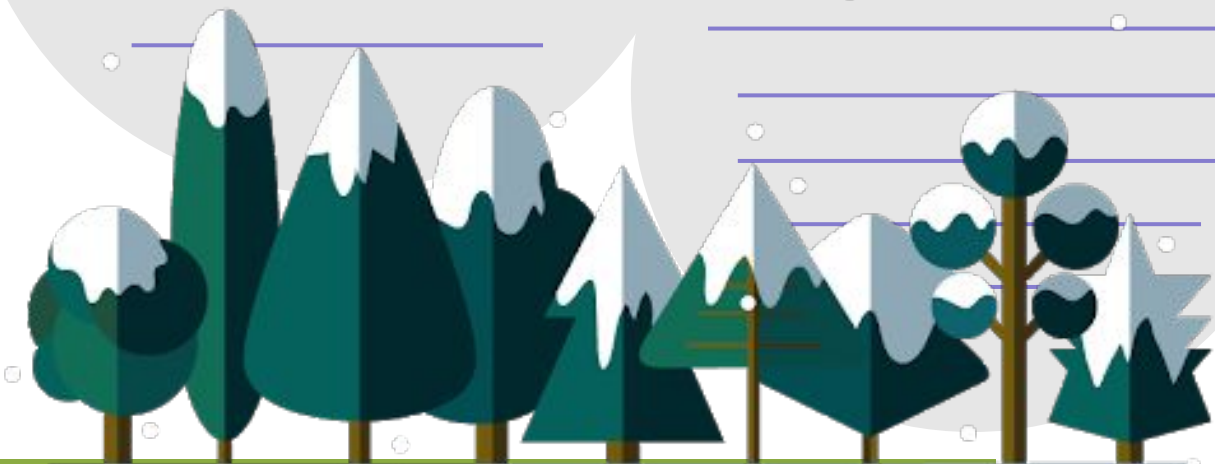
---

---

---

---

---





Name: \_\_\_\_\_

# Let's Color!



Throughout her life, Jane Goodall has published numerous articles and much research to help protect the chimps. Let's get to know more about her campaigns by coloring the circle with the correct color on the notes.

UN Secretary  
General appointed  
Jane to serve as UN  
Messenger of  
Peace.

Jane founded the  
Jane Goodall  
Institute for Wildlife  
Research,  
Education, and  
Conservation.

"My Life Among Wild  
Chimpanzees" was  
her first article  
published in National  
Geographic

The ChimpanZoo  
was launched to  
improve the lives of  
captive  
chimpanzees.

1963

1977

1984

2002

**SOURCE**

<https://www.janegoodall.org.uk/jane-goodall/biography>



Name: \_\_\_\_\_

# Animal Report



Imagine that you're Jane's assistant researcher. Observe the behavior of your pet for a week and write your findings below.

DAY 1

---

---

---

---

---

---

---

DAY 2

---

---

---

---

---

---

---

DAY 3

---

---

---

---

---

---

---

DAY 4

---

---

---

---

---

---

---

DAY 5

---

---

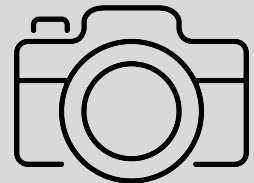
---

---

---

---

---



Name: \_\_\_\_\_

# Intelligent Animals



Aside from chimps, there are many animals that are considered to be highly intelligent. Watch the video in the URL below and explain how each animal uses their intelligence.

1



2



3



4



5



URL

<https://www.youtube.com/watch?v=3rBapgk8tmA>

PIG \_\_\_\_\_

DOLPHIN \_\_\_\_\_

PARROT \_\_\_\_\_

BUMBLEBEE \_\_\_\_\_

ELEPHANT \_\_\_\_\_

